

Preparing for Adulthood

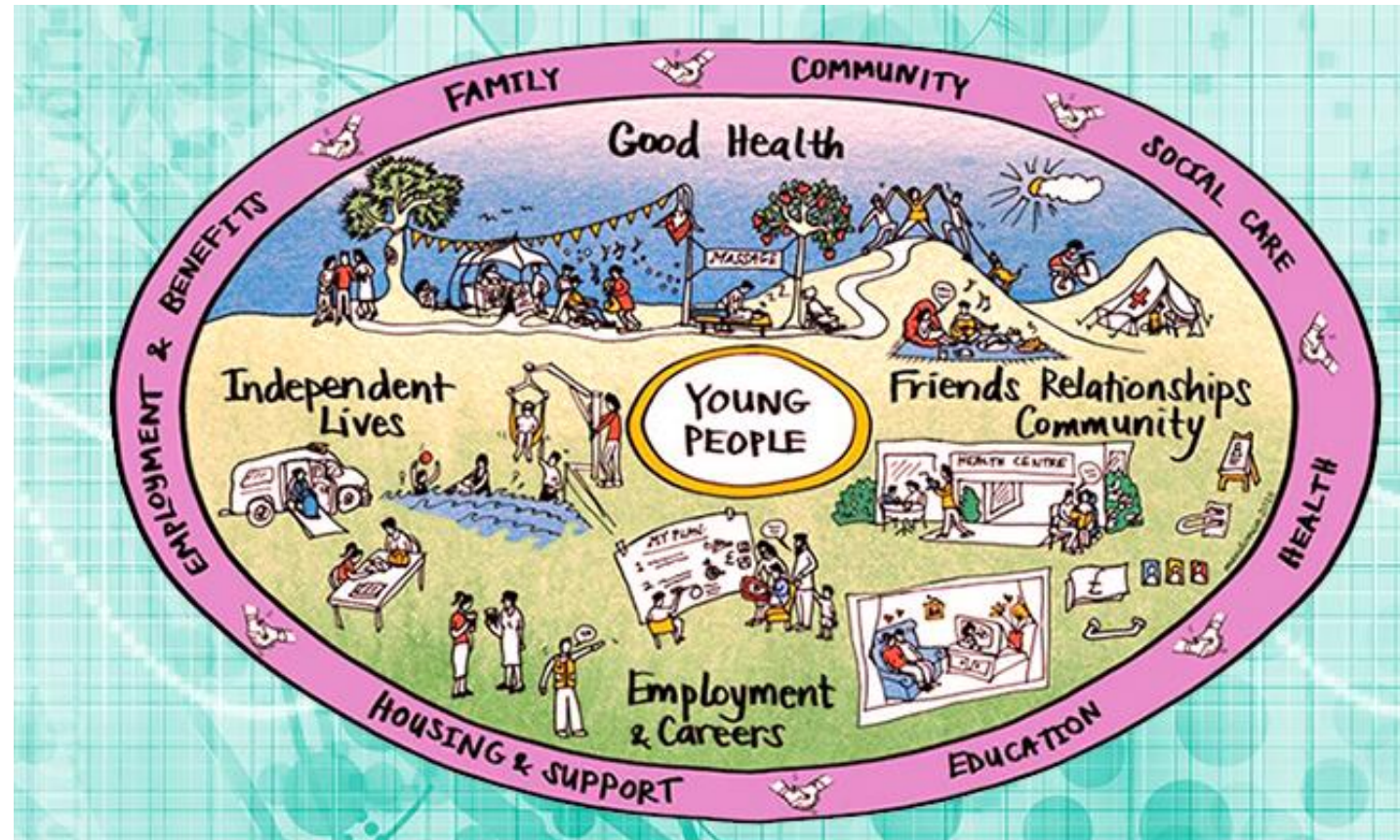


Bexley Voice 15 03 2022

Diane Burrows – Senior Social Worker

Who we work with

Working with young people with SEND from aged 14 to 25 years and their parent / carers, to support their transition to adulthood



Structure of Adult Social Care

Triage Team

- Social Workers & Social Care Assistants
- Occupational Therapists
- Mental Health Nurse
- Physiotherapist
- Assistive Technology

Complex Care Team

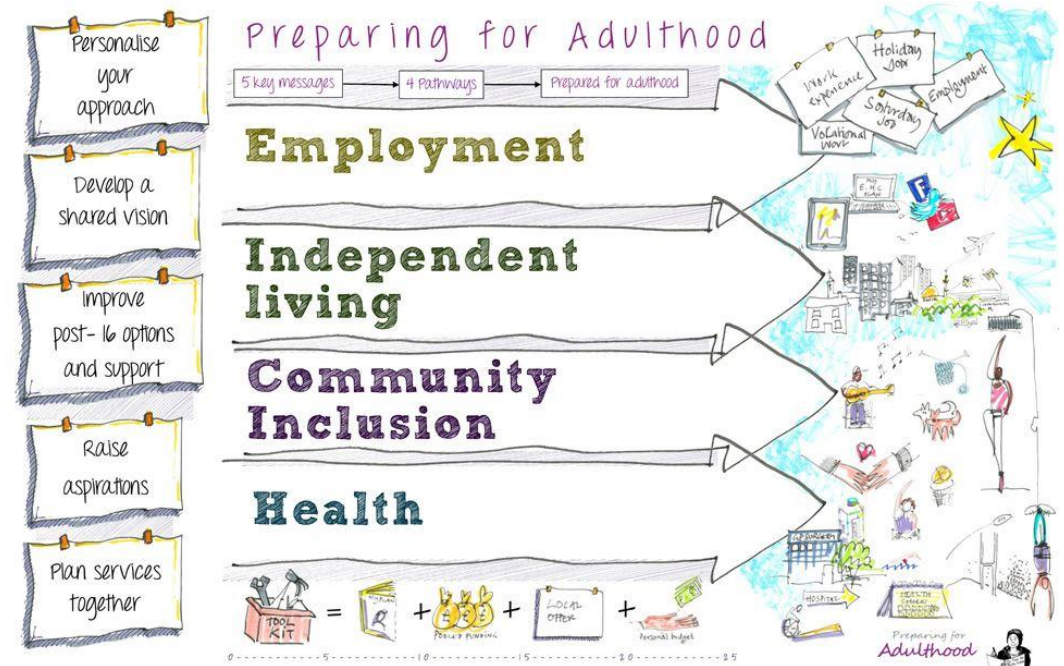
- Social Workers & Social Care Assistants
- Working with 18 years +
- Service user assessments
- Carer's assessments
- Annual reviews
- Strength-Based Forum

Brokerage

- Care Coordinators – arrange supported living and residential placements
- Brokers– arrange direct payments / ISF / respite / care packages
- Day Care and Respite Support Coordinator

Functions of the Team

- Introduce ourselves in year 9 (13-14)
- Start assessment process in year 11 (16 years)
- Services and funding agreed by 17.5 years in preparation for turning 18 years old
- Planning for upcoming transitions (changes to accommodation / education)



Legislation

Children and Families Act 2014	Care Act 2014
Introduced EHCPs with clearly defined outcomes	Assessments that are outcome focused
Emphasis on the importance of Preparing for Adulthood within year 9 EHCP review.	Promote wellbeing and independence
Specific outcomes around: <ul style="list-style-type: none">• Employment• Independent living• Community Inclusion• Health	<ul style="list-style-type: none">• Control by the individual over day-to-day life• Participation in work, education, training or recreation;• Social and economic wellbeing;• Domestic, family and personal relationships;• Suitability of living accommodation;• The individual's contribution to society.
Must consider wellbeing of carer	Must consider wellbeing of family / friends who have a caring role
Duty to ensure integration of health, education and care	Duty to provide a range of services to meet identified needs

ASC Duties under Care Act 2014

16.8

Local authorities **must** carry out a transition assessment of children, young carers and child carers when there is significant benefit to the young person or carer in doing so, and if they are likely to have needs for care or support after turning 18.

The provisions in the Care Act relating to transition to adult care and support are not only for those who are already receiving children's services, but **for anyone who is likely to have needs for adult care and support after turning 18.**

Care Act 2014: Eligibility Criteria

All elements of the criteria must be met

1. **Person's needs are due to a physical or mental impairment or illness**
2. **Due to these needs they are unable to achieve two or more of the following specified outcomes:**
 - a) Managing and maintaining nutrition
 - b) Maintaining personal hygiene
 - c) Managing toilet needs
 - d) Being appropriately clothed
 - e) Being able to make use of the adult's home safely
 - f) Maintaining a habitable home environment
 - g) Developing and maintaining family or other personal relationships
 - h) Accessing and engaging in work, training, education or volunteering
 - i) Making use of necessary facilities or services in the local community including public transport and recreational facilities or services
 - j) Carrying out any caring responsibilities the adult has for a child
3. **If these needs are left unmet this would have a significant impact on the young person's well-being.**

Year 9 EHCP Review

- Introduce the role of PFA to young person and their parents / carers
- Consider the possible care and support needs the young person may have as an adult.
- [EHCP example](#)
- [EHCP Review example](#)
- Share the [PFA Guide](#) with young person and their parent / carer

From 16 years onwards...

Worker to:

- Complete draft assessment, including young person's ability to understand the process and participate. If needed, identify appropriate advocate.
- Connect with other agencies and support services
- Attend meetings, i.e. Child Looked After, Child in Need, Education, Health & Care Plan Reviews etc.
- Track person's progress in transition

Between 17 and 18 years...

Steps to identify and provide support, if necessary:

- Finalise strength's based single assessment
- Consider if NHS Continuing Healthcare funding is applicable, and support application
- Complete Resource Allocation Tool (RAS) for young people in the community to identify potential funding
- Financial assessment needed to determine personal contribution
- Where necessary, obtain funding agreement to support transition to adulthood

18th Birthday!



Welcome to Adulthood

Change for young person	Change for parent / carer
Will be making their own decisions, unless assessed as lacking mental capacity to do so	Parental responsibility ends / role as carer begins Parent's contribute to decision making
Pre-arranged support starts	Support for carer – respite / direct payments
Benefit entitlements may increase – Universal Credit	Benefit entitlements may decrease – Family Tax Credit / Child Benefit
Child Looked After / Care Leavers to begin working with a Personal Adviser from Bexley's Leaving Care Team / £2000 settlement allowance	End of having an assigned case worker
Safeguarding Adults Protection	Can apply for deputyship for Health and Welfare and Property & Affairs
Role of advocate	

Support to achieve outcomes

- Information & Signposting
- Personal Budgets
- Self or Managed Service
- Direct Payments / Pre-paid Cards
- Community Individual Service Funds (ISF)
- Respite for carers
- Accommodation including Shared Lives
- Employment / training opportunities

Direct payments & ISF

Direct Payments

- Purchase support from an agency
- Employ own Personal Assistant
- Choose other respite services
- Attend day centres / groups / clubs
- Creative uses include: Merlin Pass, Gym Membership, Annual Cinema Pass

Individual Service Fund

- Individual budget is calculated based on needs
- Assessment sent to the agencies on the ISF Framework
- Agencies will arrange an assessment
- Adult chooses from those agencies who are able to meet the person's needs
- Agency and adult work together to decide how to use the budget to meet their needs

Useful Contacts

- Children with Disabilities Team CWDSAdmin@bexley.gov.uk
- SEN Team SENDenquiries@bexley.gov.uk
- SEN Transport BITU@bexley.gov.uk
- Leaving Care Team LCT1 / LCT2 / LCT3@bexley.gov.uk
- Preparing for Adulthood www.preparingforadulthood.org.uk
- Bexley's Local Offer www.bexleylocaloffer.uk
- Bexley Voice www.bexleyvoice.org.uk/

Preparing for Adulthood Team

Diane Burrows

preparingforadulthoodteam@bexley.gov.uk

diane.burrows@bexley.gov.uk / x 3201